

CARVING



Decor

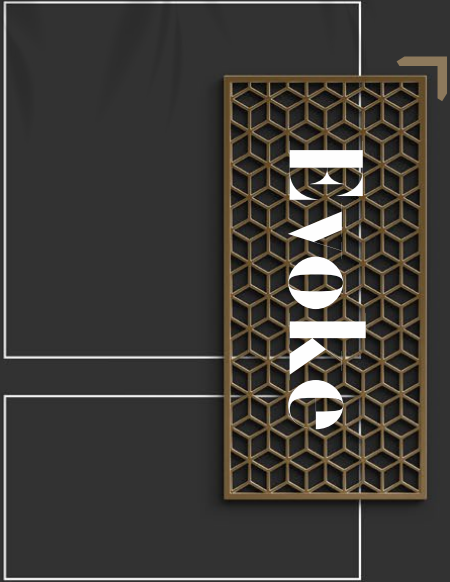
series

600 X 1200 MM



Richness
Of
Charm

Decor
series



Beauty Evoke a New Personality



Decor
series

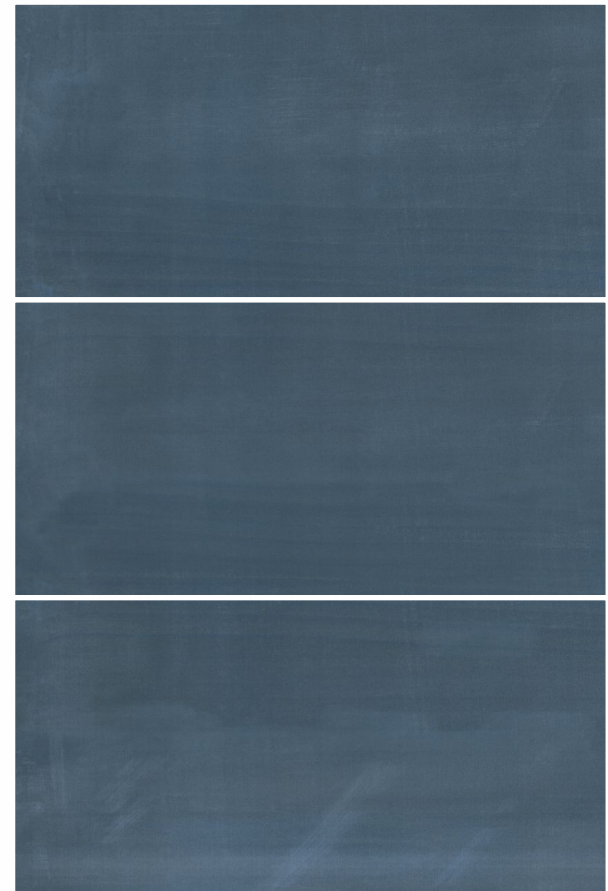


Decan Blue

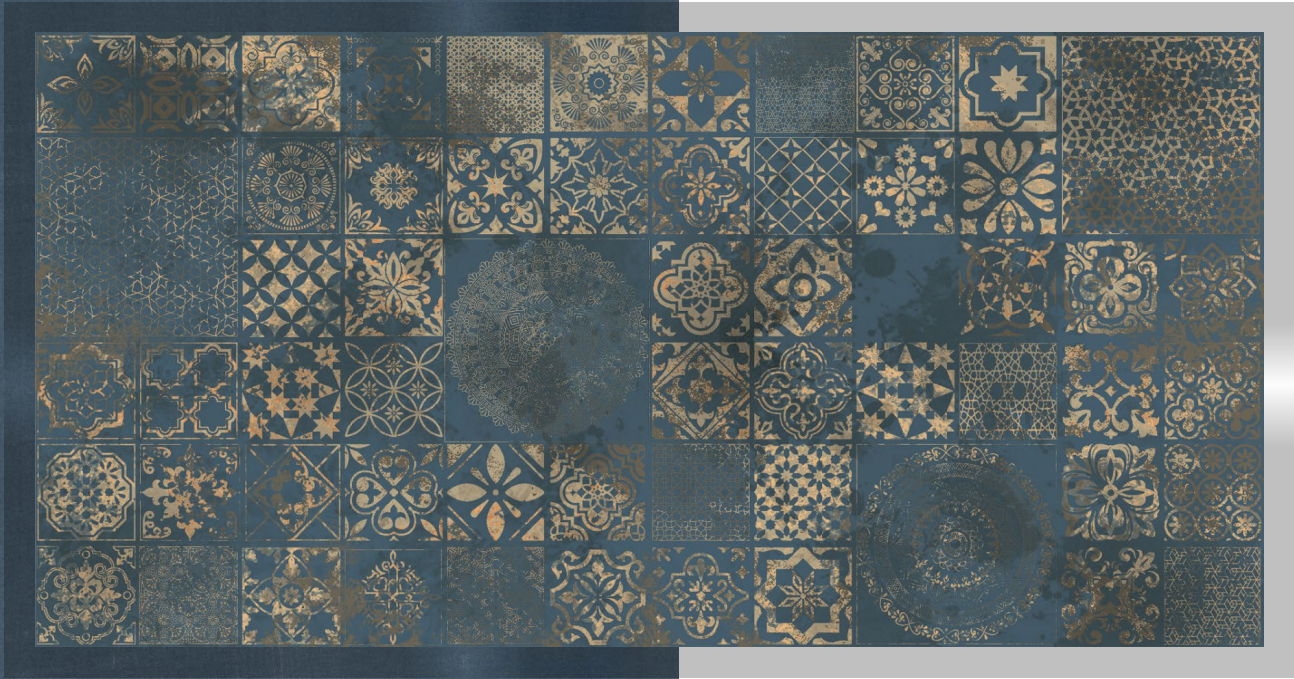
Carving |   HD 

Vendetta Blue

R-6



600x1200mm / Matt



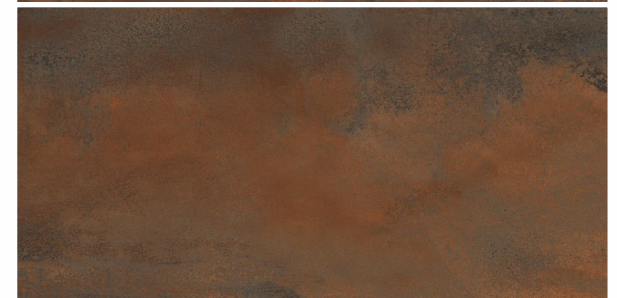
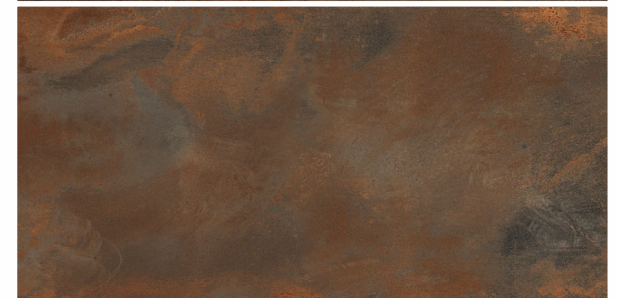


Decan Rustin Bronze

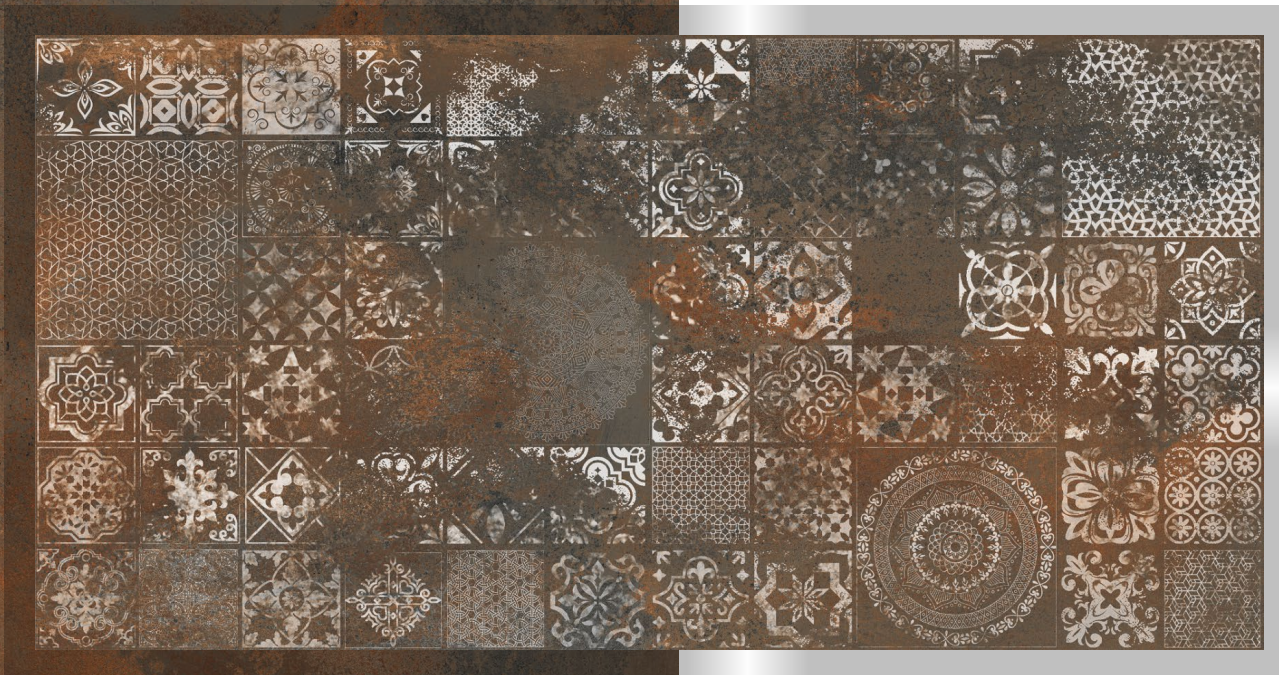
Carving |    

Rustin Bronze

R-6



600x1200mm / Matt



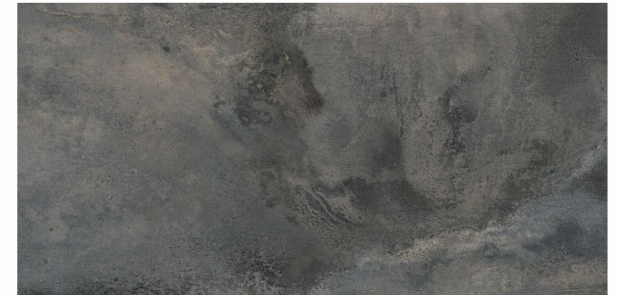


Decan Rustin Silver

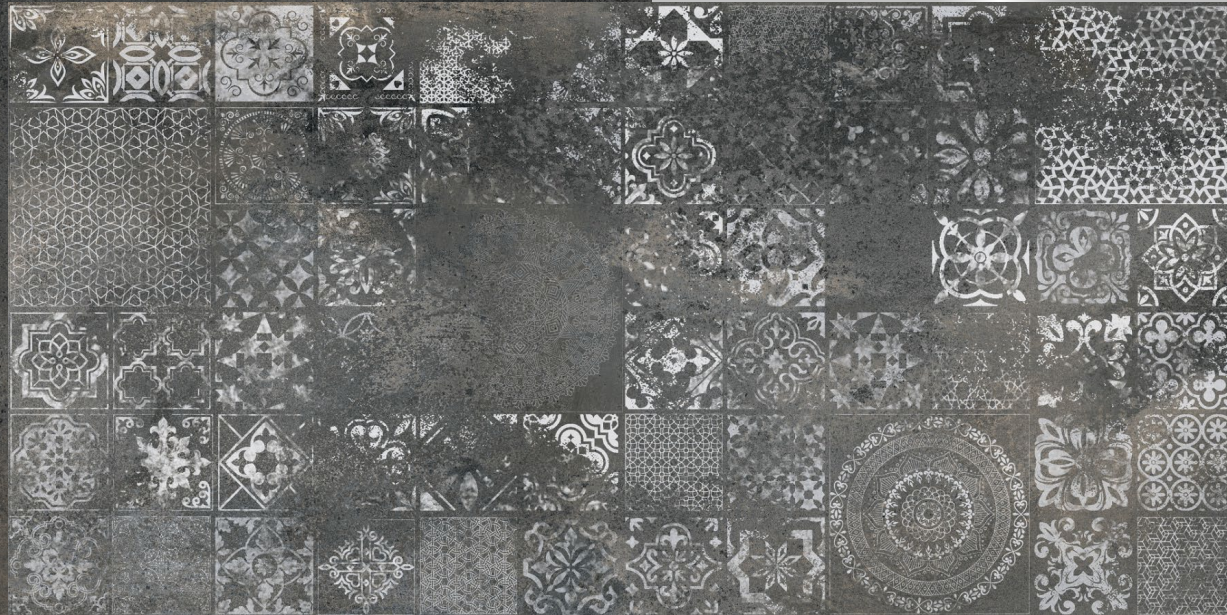
Carving |   HD 

Rustin Silver

R-6



600x1200mm / Matt





Ethnic Lavasa Decor

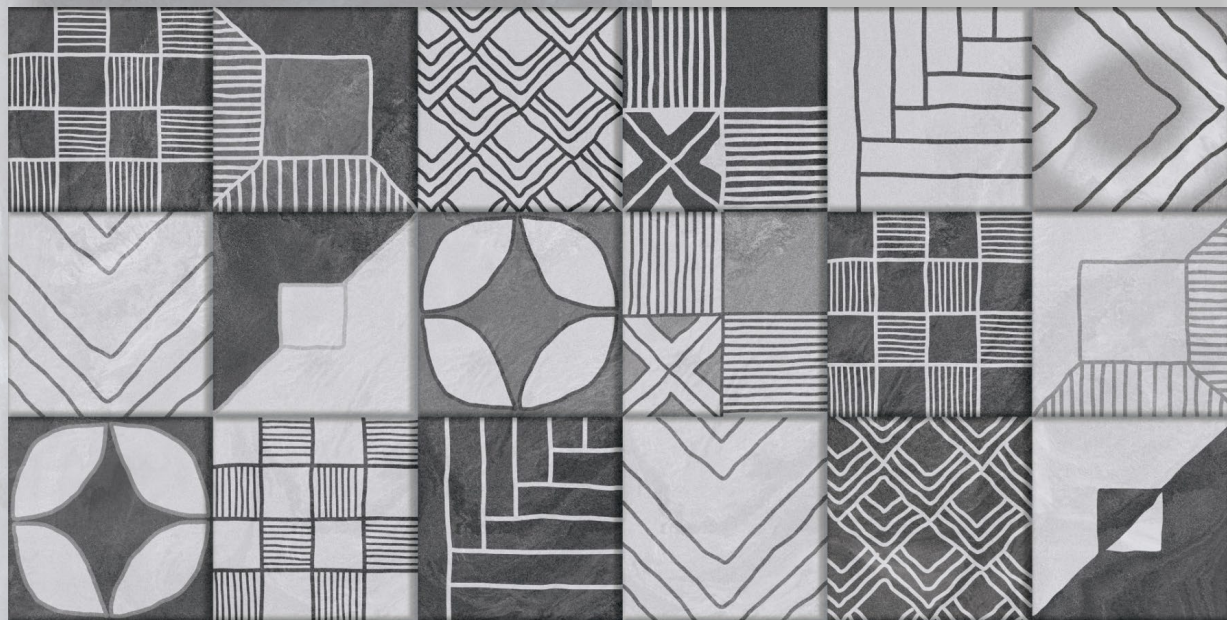
Carving |   HD 

Lavasa Bianco

R-6



600x1200mm / Matt

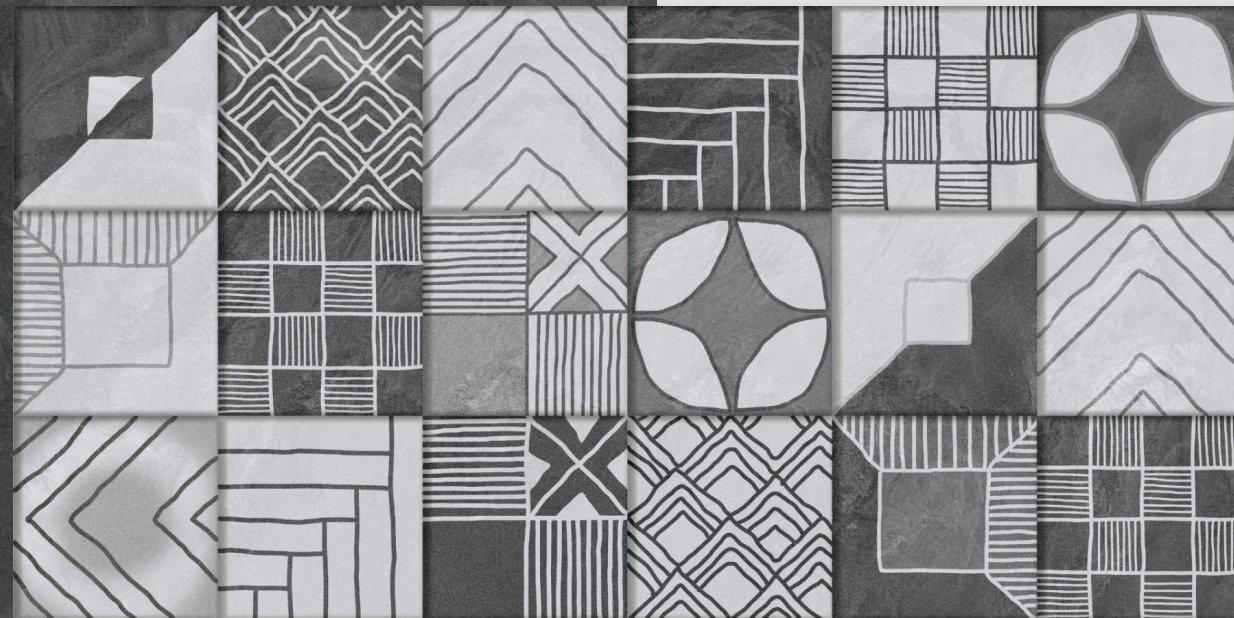
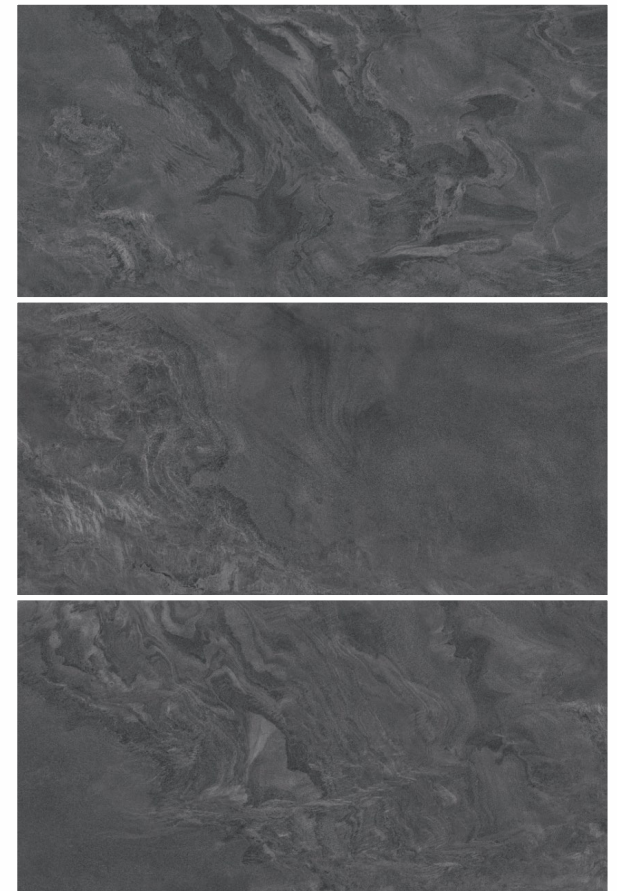




Ethnic Lavasa Decor

Carving |   HD 

Lavasa Black



600x1200mm / Matt



Italo Beige Decor

Carving |   HD 

Italo Beige

R-5



600x1200mm / Matt



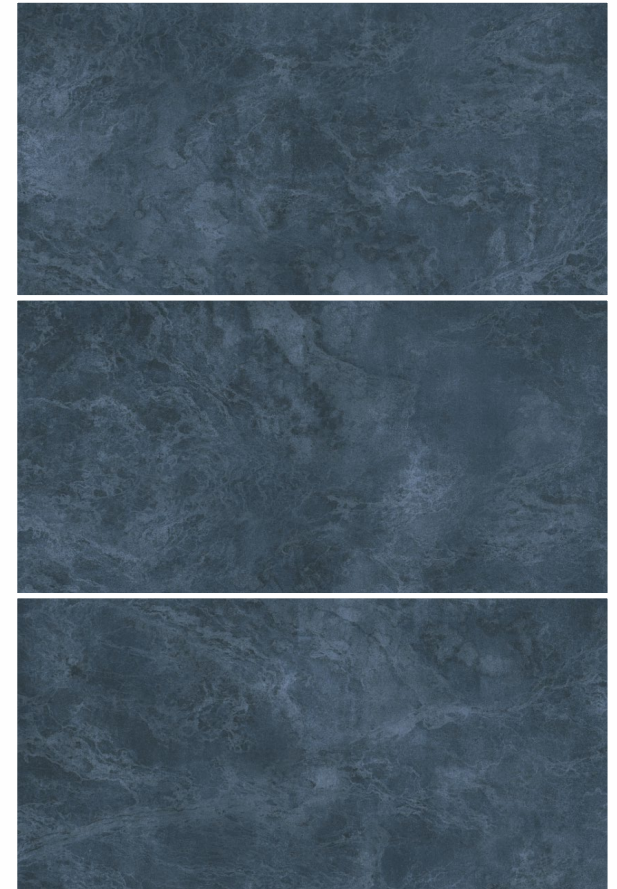


Italo Blue Decor

Carving |   HD 

Italo Blue

R-5



600x1200mm / Matt



Moroccan Martin Brown Decor

Carving |   HD 

Martin Brown

R-6



600x1200mm / Matt





Moroccan Martin Brown Decor

Carving |   HD 

Martin Ivory



600x1200mm / Matt



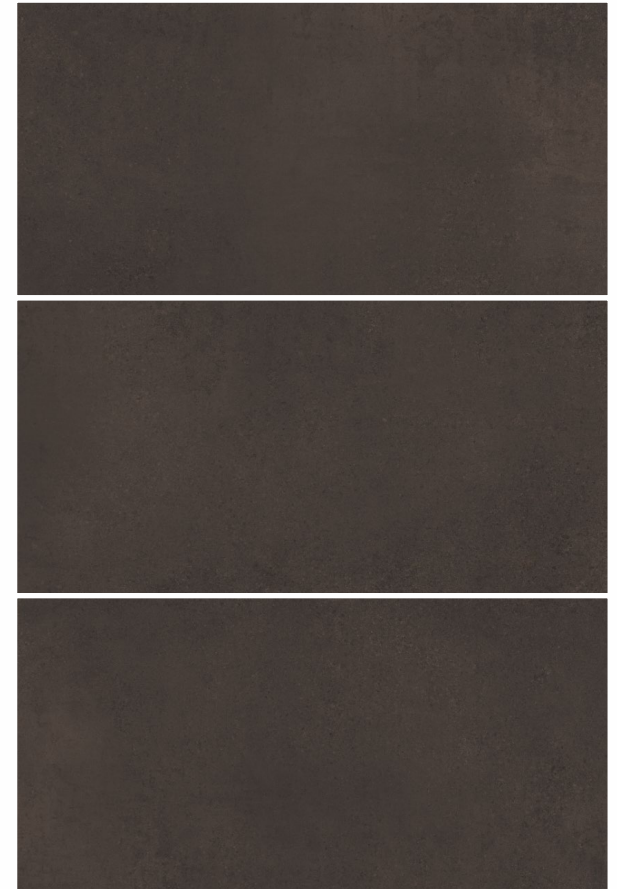


Moroccan Martin Coffee Decor

Carving |   HD 

Martin Coffee

R-6



600x1200mm / Matt





Moroccan Martin Coffee Decor

Carving |   HD 

Martin Ivory



600x1200mm / Matt



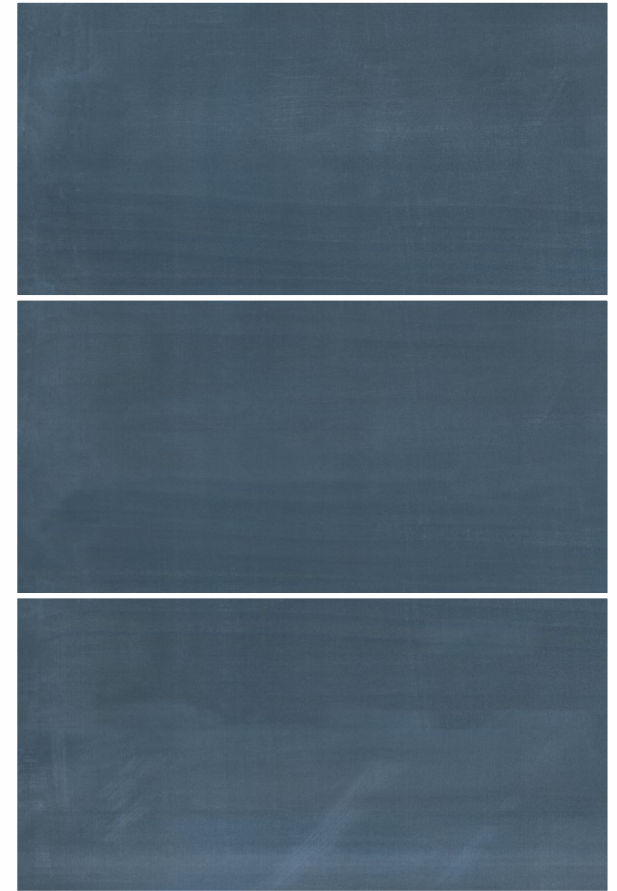


Royal Vendetta Decor

Carving |   HD  

Vendetta Blue

R-6



600x1200mm / Matt

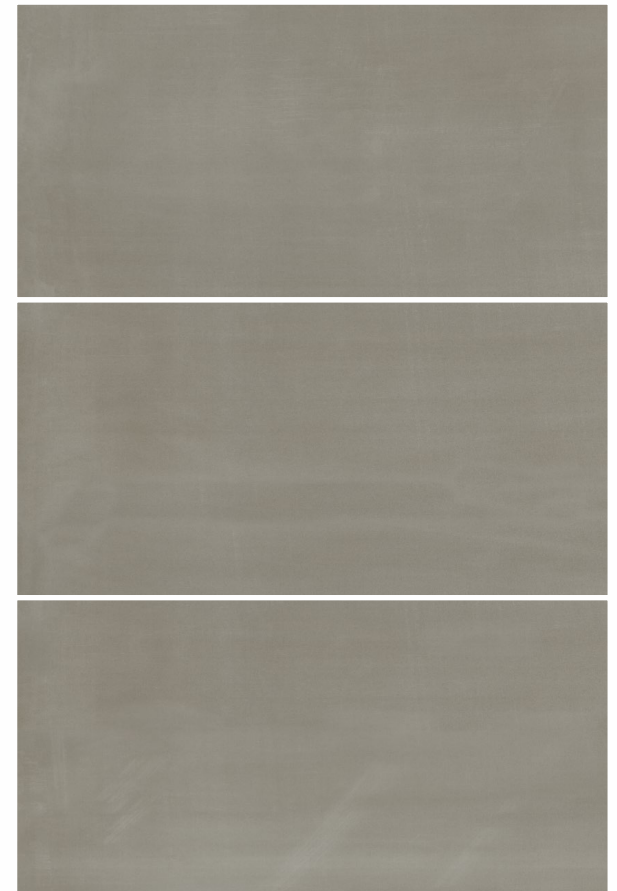


Royal Vendetta Decor

Carving |   HD 

Vendetta Silver

R-6



600x1200mm / Matt



Decor
series

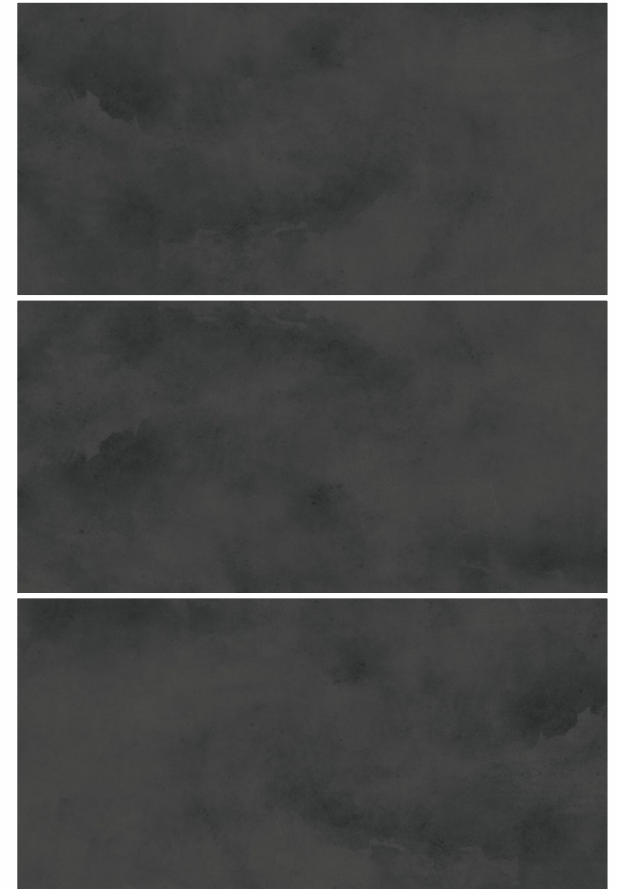


Sargo Grey Decor

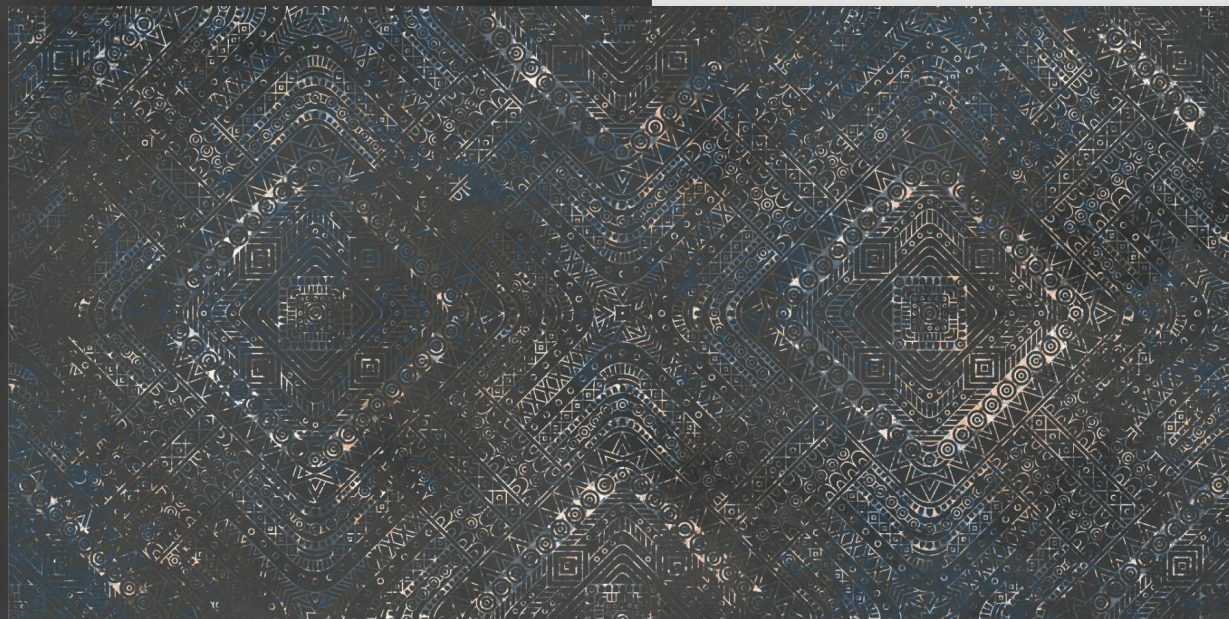
Carving |   HD 

Sargo Grey

R-3



600x1200mm / Matt





TERAZZO



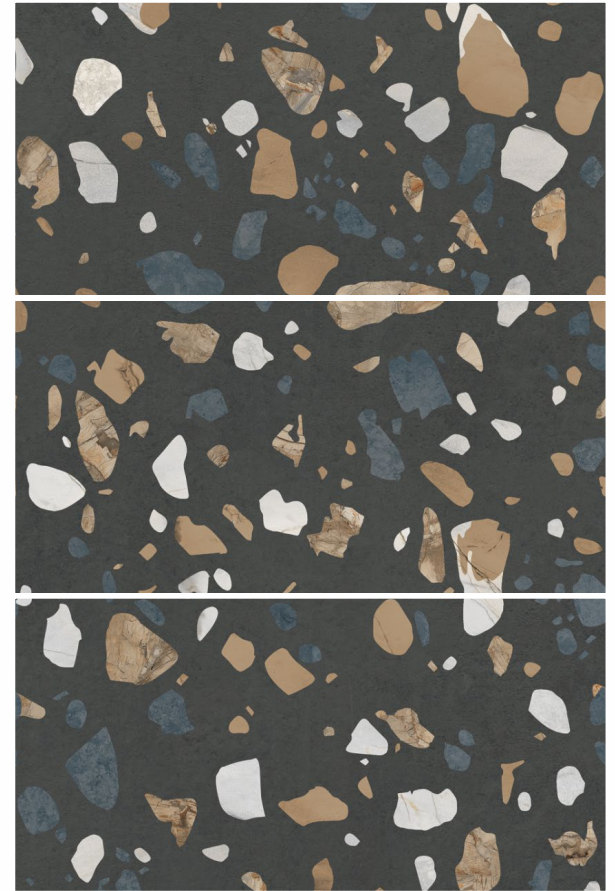
The Beauty that nourishes the soul.



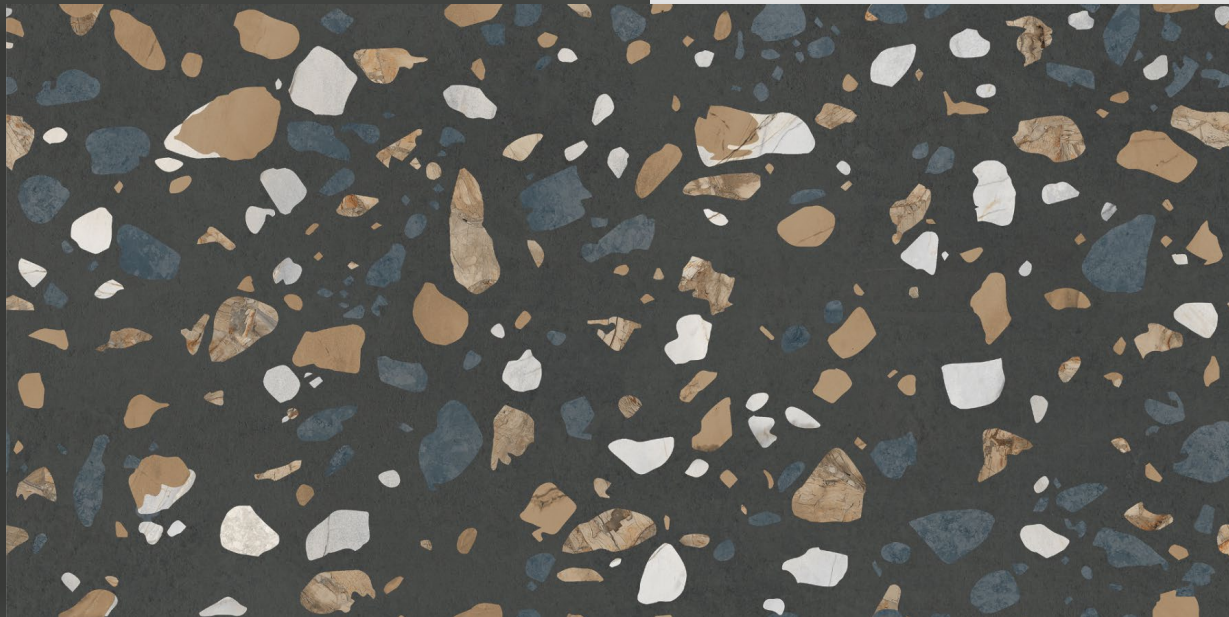
Charcoal Taro



Charcoal Taro



600x1200mm / Carving

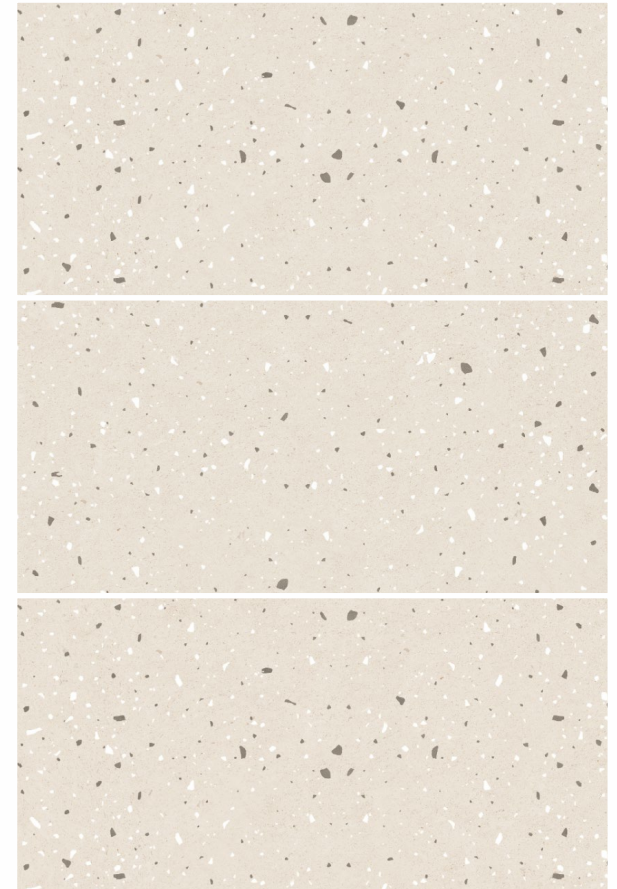




Terina Beige



Terina Beige



600x1200mm / Carving

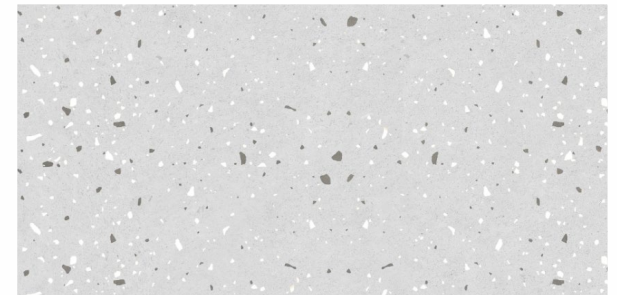
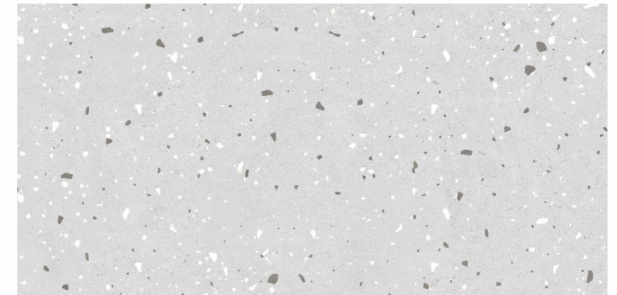
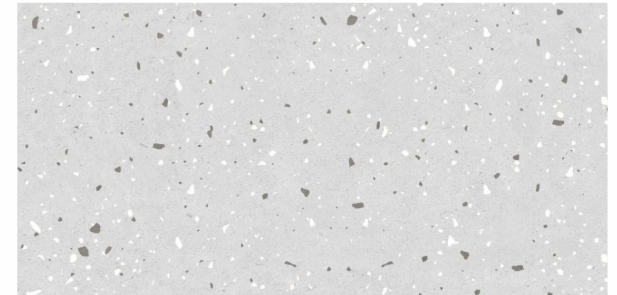




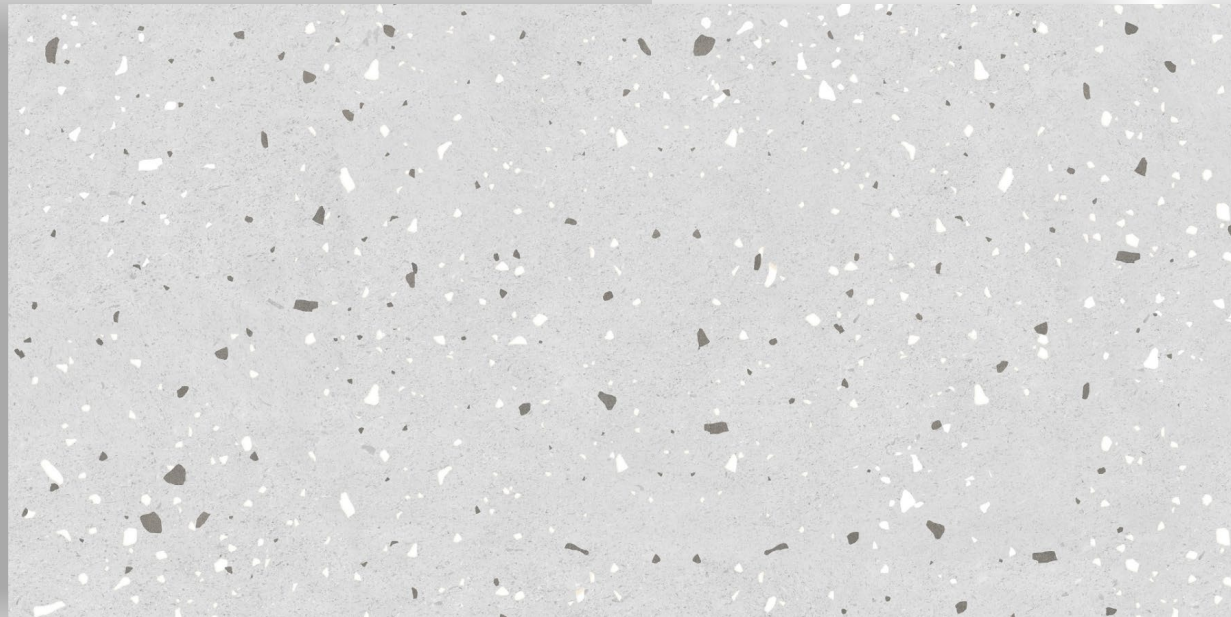
Terina Grey



Terina Grey



600x1200mm / Carving





Terza Beige



Terza Beige



600x1200mm / Carving



Terza Stone



Terza Stone



600x1200mm / Carving

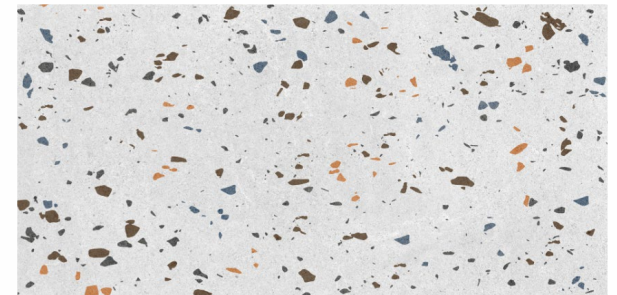
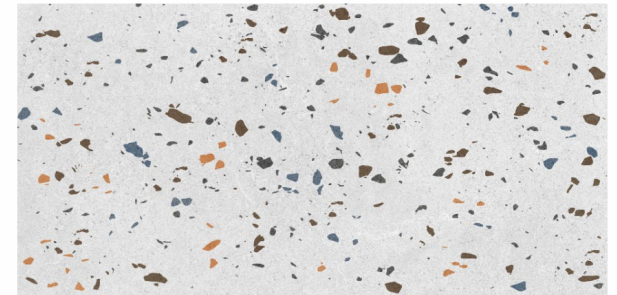
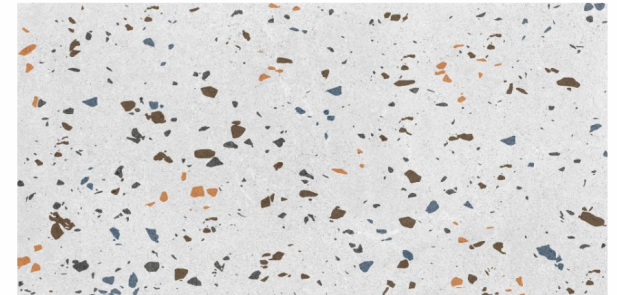




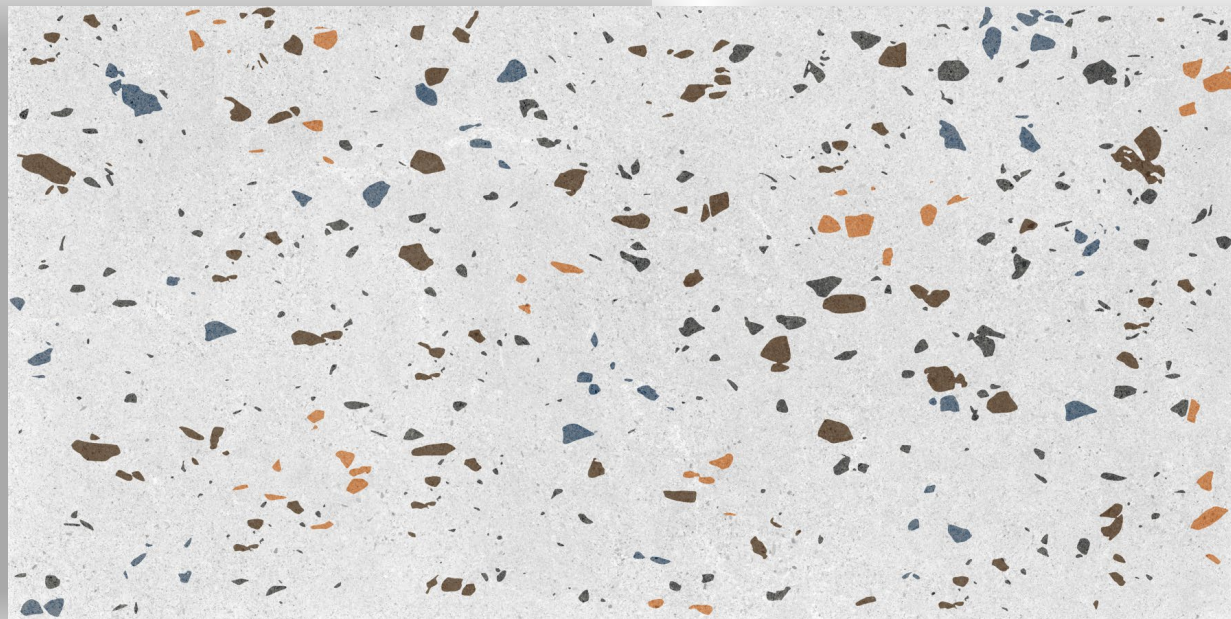
Trion Silver



Trion Silver



600x1200mm / Carving



GVT/ PGVT SPECIFICATIONS

| Test Description | Test Method | ISO 13006:2018 / EN 14411 Group B1a Requirement | Indian Standard IS 15622:2017 Group B1a Requirement | Value (Polished) | Value (Matt) |
|----------------------------------|----------------------------|---|--|--------------------------------------|--------------------------------------|
| Length & Width | ISO 10545-2 / IS 13630-1 | ± 0.3% or ±1.0mm | ± 0.1 % | ± 0.1% | ± 0.1% |
| Thicness | ISO 10545-2 / IS 13630-1 | ± 5% or ± 0.5mm | ± 5 % | ± 4% | ± 4% |
| Straightness of Sides | ISO 10545-2 / IS 13630-1 | ± 0.3% or ±0.8mm | ± 0.1 % | ± 0.1% | ± 0.1% |
| Retangularity | ISO 10545-2 / IS 13630-1 | ± 0.3% or ± 1.5mm | ± 0.1 % | ± 0.1 % | ± 0.1 % |
| Surface Flatness | ISO 10545-2 / IS 13630-1 | ± 0.4% or ±1.8mm | ± 0.5 % | ± 0.15% | ± 0.15% |
| Surface Quality | ISO 10545-2 / IS 13630-1 | Min 95% free from visible defects | Min 95% free from visible defects | >95% free from visible defects | >95% free from visible defects |
| Water Absorption | ISO 10545-3/ IS 13630- 2 | ≤ 0.5% , individual Max 0.6% . | Avaerage ≤0.08% , Individual 0.1% , Max | ≤ 0.05% | ≤ 0.05% |
| Breaking Strength | ISO 10545-4 / IS 13630-6 | 700 N Min for thicness < 7.5 mm, 1300 Min for thicness ≥ 7.5 mm | 700 N Min for thicness < 7.5 mm, 1300 Min for thicness ≥ 7.5 mm | ≥ 1500 N | ≥ 1500 N |
| Moisture Expansion | ISO 10545-10 / IS 13630-3 | report value | 0.02 mm/ m, Max | ≤ 0.02 mm/ m | ≤ 0.02 mm/ m |
| Modulus of Repture | ISO 10545-4/ IS 13630-6 | ≥ 35 N/mm ² , Individual 32 N/mm ² , Min | Average 35 N/mm ² , Individual 32 N/mm ² , Min | ≥ 38 N/mm2 | ≥ 38 N/mm2 |
| Resistance to Surface Abrasion | ISO 10545-7 / IS 13630 -11 | report abrasion class & Cycle passec | Class II , Min | PEI II - III | PEI III-V |
| Linear Thermal Expantion | ISO 10545-8/ IS 13630-4 | report value | Max, 6x10 ⁻⁶ K ⁻¹ | ≤ 6x10 ⁻⁶ K ⁻¹ | ≤ 6x10 ⁻⁶ K ⁻¹ |
| Thermal Stock Resistance | ISO 10545-9 / IS 13630 -5 | report result | 10 cycles Min | No Damage | No Damage |
| Frost Resistance | ISO 10545-12 / IS 13630-10 | report result | required if requested by purchaser | No Damage | No Damage |
| Resistance to Chemicals | ISO 10545-13 / IS 13630-8 | GB | AA min | GA/ AA | GA/ AA |
| Resistance to Stains | ISO 10545-14 / IS 13630-8 | Min Class 3 | Class I, Min | Class3(ISO) / Class1(BIS) | Class3(ISO) / Class1(BIS) |
| Color Resistance | ISO 10545-16 | Report result | - | No change in color | No change in color |
| Color Resistance to UV Light | DIN 51094 | Report result | - | No change in color | No change in color |
| Scratch Hardness (MOH's Scale) | IS 13630 -13 | Not Required | 5, Min | ≥ 5 | ≥ 6 |

| DIMENSION | PIECES | COVERAGE |
|---------------|--------|---------------|
| 600 X 1200 MM | 2 | 1.44 sq. mtr. |

DISCLAIMER : We tiles reserve the right to deleted and amend either totally or partially, any of the colors, shape, sizes, references and other technical specification contained in this catalogue at anytime. The colors shown of tiles in this catalogue are purely illustrative and limited to printing process. Please refer actual sample before final selection. The details of sizes, colors, references should be verified for typographical errors.

